



# RoadFlair Gen2

## BRP491 LED130/NW 90W 220-240V DM GM

13000 lm - 90 W - 4000 K

The RoadFlair Gen2 is brand new design road lighting product family, set to meet customers' all-round requirements, including high lumen efficacy for energy saving and sustainability, an aesthetic design with nice shapes and appearance, quality materials and components for product reliability and long lifetime, professional optics for various applications, a dimming and system control interface for improving municipal operations and offering future-proof features. The RoadFlair Gen2 competitive price will help with the acceleration of road lighting LED transformation, to a more sustainable society and smarter city.

### Product data

General information	
Lamp colour code	740 neutral white
Driver included	Yes
Optical cover/lens type	PC-MLO [ Polycarbonate micro lens optic]
Control interface	Analog
Connection	SI [ Screw connection block]
Cable	-
Protection class IEC	Safety class I (I)
CE mark	CE mark
Operating and electrical	
Input Voltage	220 to 240 V
Input frequency	50 or 60 Hz
Power factor (min.)	0.95

Controls and dimming	
Dimmable	Yes
Mechanical and housing	
Housing material	Aluminium pressure die cast
Optical cover/lens material	Polycarbonate
Overall length	355 mm
Overall width	230 mm
Overall height	136 mm
Colour	Aluminium and Grey
Dimensions (height x width x depth)	136 x 230 x 355 mm
Approval and application	
Ingress protection code	IP66 [ Dust penetration-protected, jet-proof]
Mech. impact protection code	IK08 [ 5 J vandal-protected]

## RoadFlair Gen2

### Initial performance (IEC compliant)

Initial luminous flux (system flux)	13000 lm
Luminous flux tolerance	+/-10%
Initial LED luminaire efficacy	140 lm/W
Lamp colour temperature	4000 K
Colour Rendering Index	>70
Initial input power	90 W
Power consumption tolerance	+/-10%

### Application conditions

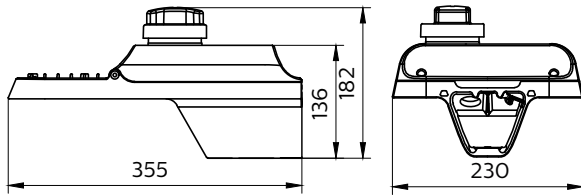
Ambient temperature range	-40 to +50 °C
---------------------------	---------------

### Product data

Full product code	87195149621800
Order product name	BRP491 LED130/NW 90W 220-240V DM GM
EAN/UPC – product	8719514962118
Order code	911401673206
SAP numerator – quantity per pack	1
Numerator – packs per outer box	1
SAP material	911401673206
Net Weight (Piece)	3.600 kg



### Dimensional drawing



BRP491 LED130/NW 90W 220-240V DM GM

