



## BATTEN TYPE

### SPECIFICATION

#### HOUSING

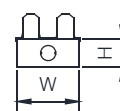
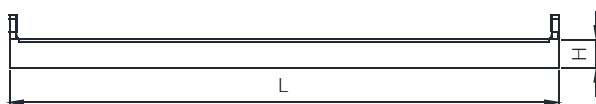
- DIE-FORMED COLD-ROLLED STEEL  
AVAILABLE IN □ 0.4 , □ 0.6 , □ 0.8 mm.  
STEEL THICKNESS
- ALL METAL PART ARE RUST-PROOFED AFTER  
FABRICATION TO PREVENT ANY CORROSION  
(ZINE PHOSPHATE)
- FINISHED WITH HIGH GRADE EPOXY POLYESTER  
POWDER COATING
- G13 ROTARY LOCKED OR SPRING LOAD  
LAMP HOLDER
- THW □ 0.5 sqmm./105c □ 1.0 sqmm./70c  
WIRING CABLE

#### INSTALLATION

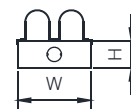
- SURFACE OR SUSPENDED MOUNTING

#### DIMENSIONS (mm.)

MODEL	TYPE	W	L	H
WB7/2S	T8	90	612	45
WB7/2S/S	T8	110	635	45
WB7/2L	T8	90	1220	45
WB7/2L/S	T8	110	1245	45



ขาบิดล็อก



ขาสปริง