



## V-SHAPE BATTEN TYPE

### SPECIFICATION

#### HOUSING

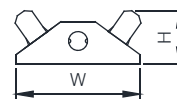
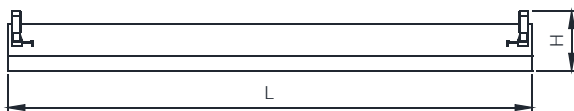
- DIE-FORMED COLD-ROLLED STEEL  
AVAILABLE IN □ 0.4, □ 0.6, □ 0.8 mm.  
STEEL THICKNESS
- ALL METAL PART ARE RUST-PROOFED AFTER  
FABRICATION TO PREVENT ANY CORROSION  
(ZINE PHOSPHATE)
- FINISHED WITH HIGH GRADE EPOXY POLYESTER  
POWDER COATING
- G13 ROTARY LOCKED OR SPRING LOAD  
LAMP HOLDER
- THW □ 0.5 sqmm./105c □ 1.0 sqmm./70c  
WIRING CABLE

#### INSTALLATION

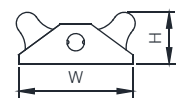
- SURFACE OR SUSPENDED MOUNTING

#### DIMENSIONS (mm.)

MODEL	TYPE	W	L	H
WB17/2S	T8	145	622	65
WB17/2S/S	T8	145	635	65
WB17/2L	T8	145	1230	65
WB17/2L/S	T8	145	1245	65



ขาบิดล็อค



ขาสปริง