



V-SHAPE BATTEN TYPE

SPECIFICATION

HOUSING

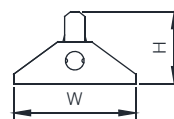
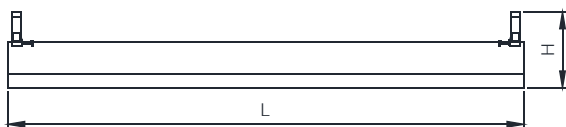
- DIE-FORMED COLD-ROLLED STEEL
AVAILABLE IN □ 0.4 , □ 0.6 , □ 0.8 mm.
STEEL THICKNESS
- ALL METAL PART ARE RUST-PROOFED AFTER
FABRICATION TO PREVENT ANY CORROSION
(ZINE PHOSPHATE)
- FINISHED WITH HIGH GRADE EPOXY POLYESTER
POWDER COATING
- G13 ROTARY LOCKED OR SPRING LOAD
LAMP HOLDER
- THW □ 0.5 sqmm./105c □ 1.0 sqmm./70c
WIRING CABLE

INSTALLATION

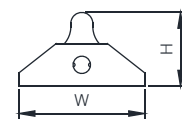
- SURFACE OR SUSPENDED MOUNTING

DIMENSIONS (mm.)

MODEL	TYPE	W	L	H
WB17/1S	T8	145	622	95
WB17/1S/S	T8	160	635	95
WB17/1L	T8	145	1230	95
WB17/1L/S	T8	160	1245	95



ขาบิดล๊อค



ขาสปริง